

Deja Series



SINGLE SECTION

Homes



Luxury and Comfort for Less

Adventure Homes of Indiana

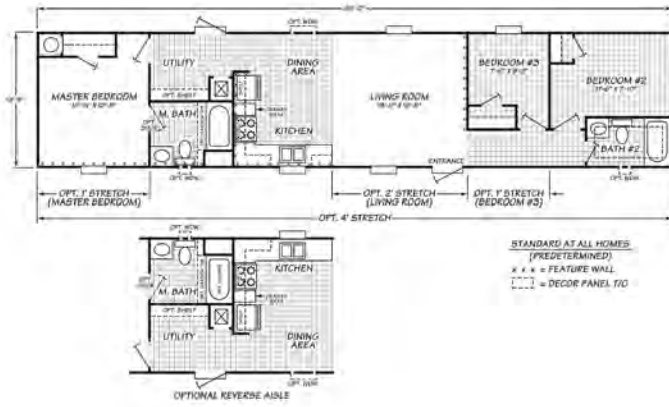
Your adventure begins here.

Columbia Series

THE *Prairie*

MODEL 2623X

3 BEDROOMS • 2 BATHS • 826 SQ. FT.

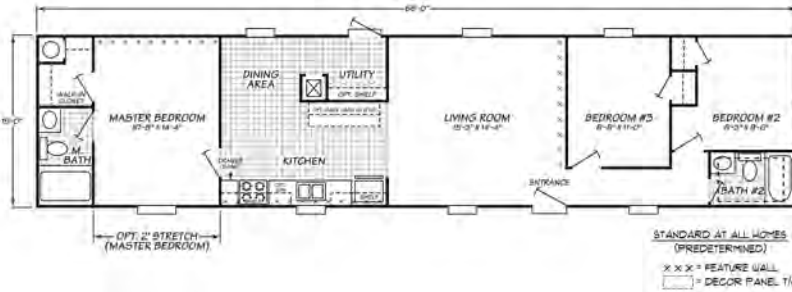


Welcome to Adventure Homes. We offer you the best value in manufactured housing. Our homes have unbelievable eye appeal, product standards, and the flexibility you need with every home we build. Additionally, we offer award winning sales, service and production teams to enhance your value even more. We look forward to assisting you and welcoming you into our family of satisfied retailers and customers!

THE *Sonoran*

MODEL 6663X

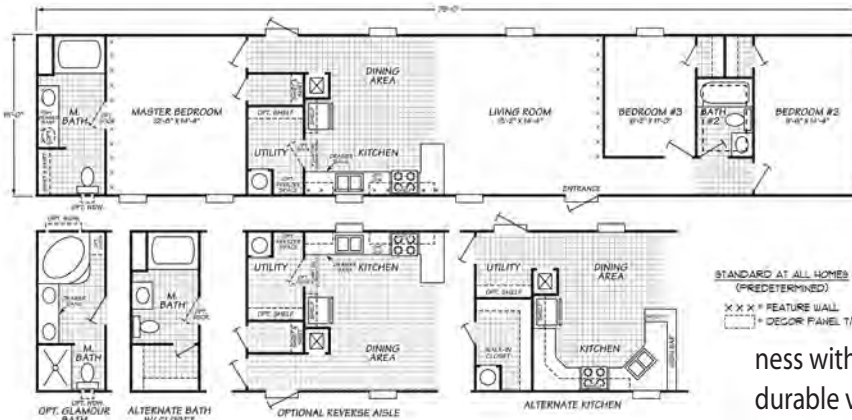
3 BEDROOMS • 2 BATHS • 990 SQ. FT.



THE *Independence*

MODEL 6763X

3 BEDROOMS • 2 BATHS • 1140 SQ. FT.



We build features into our homes to meet your lifestyle needs, to make your home more beautiful and your life easier. Our skilled craftsmen design beautiful custom cabinets to match your décor and to handle all your storage needs. Carpets come in a stunning selection of colors and thickness with stain protection for lasting beauty. Thick, durable vinyl no-wax floors are easy to clean and maintain, keeping your home looking like new.

THE *Mesa*

MODEL 1676-1

3 BEDROOMS • 2 BATHS • 1140 SQ. FT.



Major Series





Luxury and Comfort for Less

THE *Majore Series* STANDARD FEATURES

THE PRAIRIE

THE SONORAN

THE INDEPENDENCE

THE MESA



Exterior Standards

- Thermal Zone III Construction
- Nominal 3/12 Roof Pitch
- R-28-11-11 Insulation
- Vinyl siding by "Stylecrest" w/ Lifetime Warranty
- 1/4" Backer Board Wrap under Vinyl Siding
- 20 year "IKO" Fiberglass Shingles
- 7/16" OSB Roof Sheathing
- Dead Bolt Locks at Front and Rear (Keyed Alike)
- Aluminum Windows w/ Self-Storing Storms
- 2x6 Floor Joists 16" O.C. (14' Wides)
- 2x8 Floor Joists 16" O.C. (16' Wides)
- 20 LB Roof Load
- 2x4 Exterior Walls 16" O.C.
- Residential Flat Ceilings - All Models
- OSB Floor Decking
- 12" Raised Panel Shutters Hitch End
- Light Fixtures at all Exterior Doors
- Full Length Chassis w/ Outriggers 48" O.C.
- 99.5" I-Beam Spread
- Detachable Hitch



Interior Standards

- Factory Select Interior Décor
- Colored Feature Walls - Predetermined Locations
- Mini-Blinds Throughout
- Blown Textured Ceiling
- Vinyl Wall Panels Throughout
- Flat Moldings Throughout
- 15 oz Plush Carpet by "Shaw"
- 3/8" Rebond Carpet Pad
- Ventilated "Closet Maid" Vinyl Closet Shelving
- 8" Glass Lights w/ Brass Base
- Switched Recept in Bedrooms

Windows shown reflect the standard aluminum windows. Selection of optional thermal pane (vinyl) windows may affect the size, placement and quantity of windows.



Electrical, Plumbing, & Heating

- Smoke Detectors in Main Living Areas & All Bedrooms
- 200 AMP Service
- Electric Furnace
- 30 Gallon Electric Water Heater
- Exterior Electrical Receptacle - FDS
- Copper Wiring
- PEX Plumbing
- Main Water Shut Off Valve
- Metal Heat Ducts
- GFI Receptacles in Kitchen and Baths



Kitchen Standards

- Whirlpool Appliances
- 30" Free Standing Electric Range
- 18 C.F. Frost-Free Refrigerator
- 30" Power Range Hood
- 24" Overhead Cabinets
- Raised Panel Cabinet Doors
- Cabinet Doors above Range
- Bank of Drawers
- Laminated Countertops
- "Congoleum" No Wax Vinyl Flooring
- Stainless Steel Kitchen Sink



Bath Standards

- Tub Shower w/ Surround
- Laminated Countertops
- "Congoleum" no wax vinyl flooring
- Power Exhaust Fans in all Baths
- China "Water Saver" Commodes

Because of continuous product improvements, specifications are subject to change without notice or obligation.



Luxury and Comfort for Less

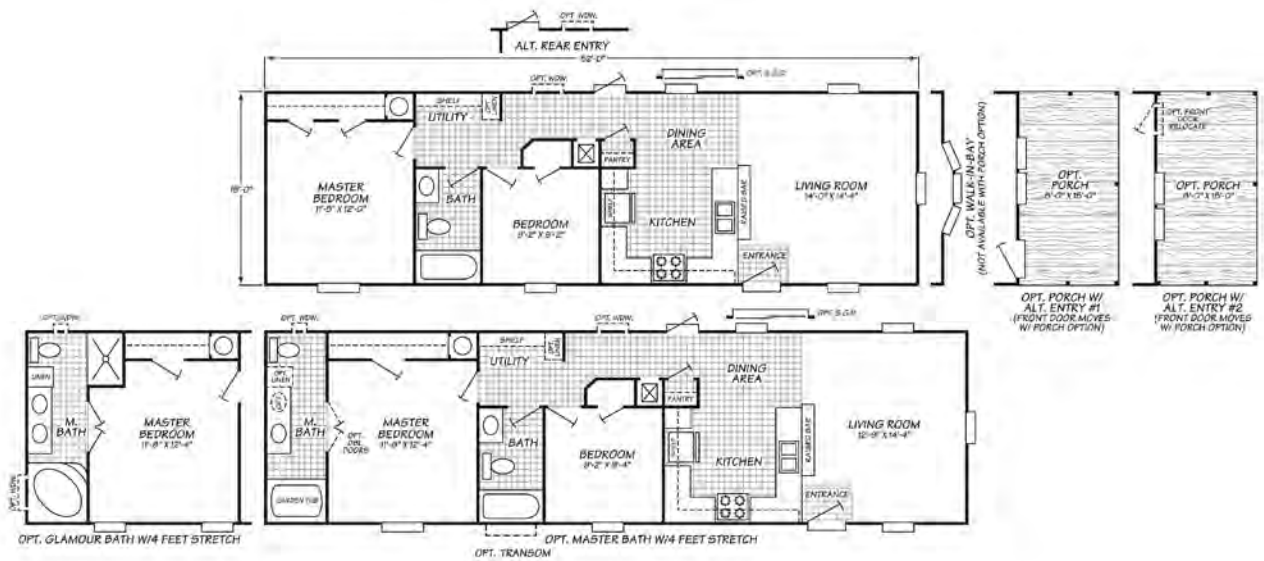
Adventure Homes of Indiana

1119 Fuller Drive • Garrett, IN 46738 • Ph: 877.510.1955 • www.adventurehomes.net

THE *Vista*

MODEL 6522W

2 BEDROOMS • 1 BATH • 780 SQ. FT.



THE *Conestoga*

MODEL 6603U

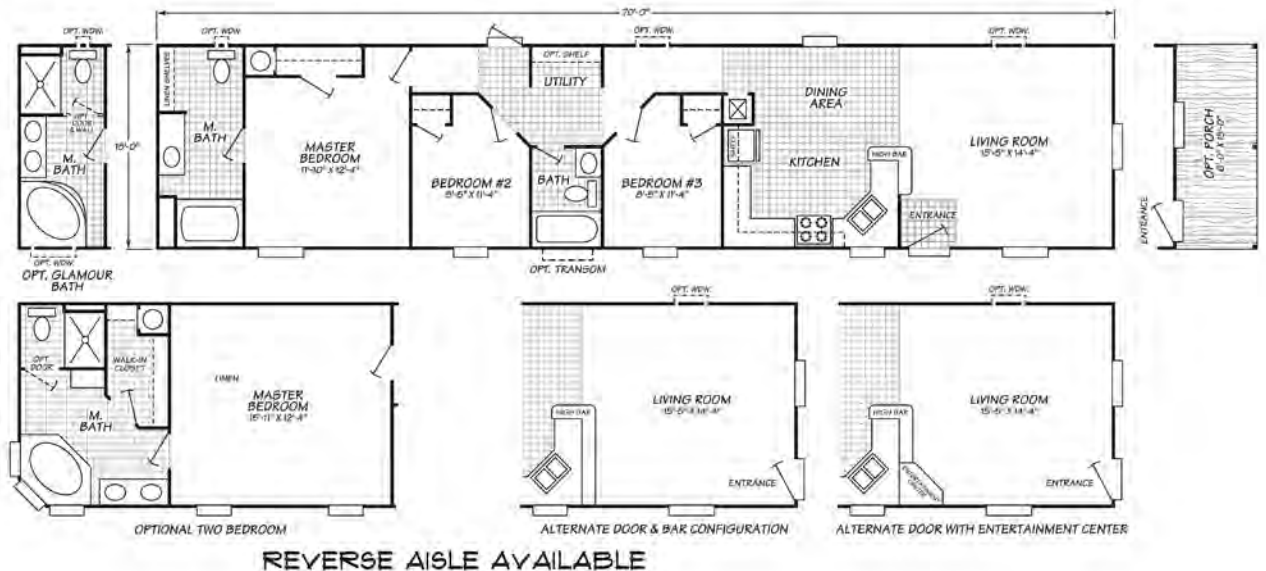
3 BEDROOMS • 2 BATHS • 900 SQ. FT.



THE *Winchester*

MODEL 6703F

3 BEDROOMS • 2 BATHS • 1020 SQ. FT.

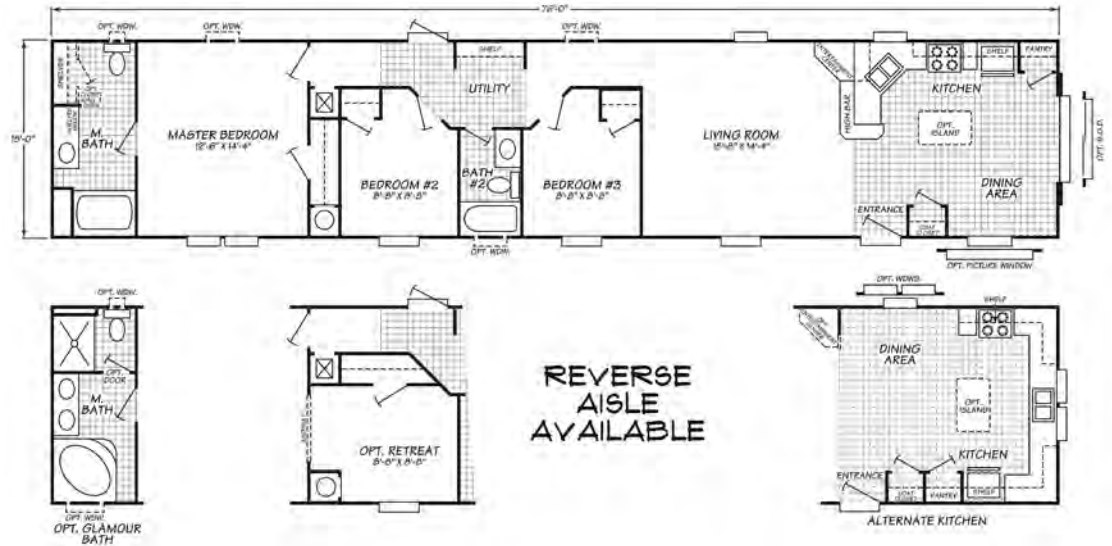


Columbia Series

THE *Cumberland*

MODEL 6763F
3 BEDROOMS • 2 BATHS • 1140 SQ. FT.

Your satisfaction is our number one goal. We build each and every home as if it were our own, so you know that it will be done right. Your new home will receive over 200 inspections during the building process. Should any problems arise our trained and knowledgeable staff will work hard to get it fixed quickly... and to your satisfaction.



THE *Yosemite*

MODEL 6763K
3 BEDROOMS • 2 BATHS • 1140 SQ. FT.



THE *Gettysburg*

MODEL 6763U
3 BEDROOMS • 2 BATHS • 1140 SQ. FT.

Whether you're considering a modest single section home or one of our spacious multi-sections homes your life in a new Adventure Home is sure to be an exciting and fulfilling experience. And we'll be here every step of the way to help you along your journey.

Thank you for considering an Adventure Home.



A good adventure always takes you home!



Luxury and Comfort for Less

877.510.1955

THE *Columbia Series* STANDARD FEATURES

THE SEQUOIA
THE NORTHWEST
THE OASIS
THE TETON

THE VISTA
THE CONESTOGA
THE WINCHESTER

THE CUMBERLAND
THE YOSEMITE
THE GETTYSBURG



Exterior Standards

Thermal Zone III Construction
R-28-11-11 Insulation
Nominal 3/12 Roof Pitch
Vinyl siding by "Stylecrest" w/ Lifetime Warranty
20 year "IKO" Fiberglass Shingles
7/16" OSB Roof Sheathing
3/8" OSB Exterior Wrap
White Aluminum Windows w/ Self-Storing Storms
2x6 Floor Joists 16" O.C. (14' Wides)
2x8 Floor Joists 16" O.C. (16' Wides)
20 LB Roof Load
2x4 Exterior Walls 16" O.C.
Residential Flat Ceilings - All Models
OSB Floor Decking
34X80 Steel Front Door with Split Screen Storm
12" Raised Panel Shutters @ FDS & Hitch End
Blank Fiberglass Rear Door with Peep Hole
Dead Bolt Locks at Front and Rear (Keyed Alike)
Light Fixtures at all Exterior Doors
Full Length Chassis w/ 99.5" I-Beam Spread
Detachable Hitch



Interior Standards

Interior Décor Selections w/ Colored Feature Walls
Mini-Blinds Throughout
Blown Textured Ceiling
Vinyl Wall Panels Throughout
Full Length White 6 Panel Raised Interior Doors
with/ Return Air Grills Above
Door Stop on all 3 Sides (Except Closets)
Interior Door Stops
Flat Moldings Throughout
16 oz Plush Carpet by "Shaw"
3/8" Rebond Carpet Pad
Linoleum Entry @ Front Door (Except 2401S)
Valances in Living Areas and Bedrooms
Utility Shelf
Oil Rubbed Bronze Overhead Glass Light Fixtures
Ventilated Vinyl Closet Shelving



Electrical, Plumbing, & Heating

Smoke Detectors in Main Living Areas
& All Bedrooms
100 AMP Service
Gas Furnace
5 Wire Thermostat (AC ready)
30 Gallon Electric Water Heater
Exterior Electrical Receptacle - FDS
Plumb and Wire for Washer and Dryer
Copper Wiring
PEX Plumbing
Water Shut- Off Valves Throughout
Metal Heat Ducts
GFI Receptacles in Kitchen and Baths



Kitchen Standards

Whirlpool Appliances
30" Free Standing Electric Range
18 C.F. Frost-Free Refrigerator
30" Power Range Hood
30" Overhead Cabinets
Raised-Panel MDF Cabinet Doors
Fixed Center Shelf in Overhead Cabinets
Oil Rubbed Bronze Cabinet Pulls Throughout
Concealed Cabinet Door Hinges
Cabinet Doors above Range
Bank of Drawers w/ Residential Drawer Guides
Laminated Countertops and Backsplash
Shelf w/ Bead Board above Refrigerator
"Congoleum" No Wax Vinyl Flooring
Stainless Steel Kitchen Sink



Bath Standards

1 Pc. Fiberglass Tubs in Both Bathrooms
Laminated Countertops and Backsplash
"Congoleum" no wax vinyl flooring
Mirror Above Sinks
Power Exhaust Fans in all Baths
Plastic Sinks w/ Dual Lever Faucets
China "Water Saver" Commodes

Because of continuous product improvements, specifications are subject to change without notice or obligation. Windows shown reflect the standard aluminum windows. Selection of optional thermal pane (vinyl) windows may affect the size, placement and quantity of windows.

October 2009